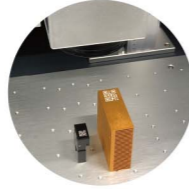


## Optional Items



Rotary Attachment



MultiFOCUS

| Specification               | LFC D Desktop Workstation   |
|-----------------------------|---|
| Model                       | LFC D   |
| Available Laser Marker      | CIIA 12/30, CIIP12/30, CIIS 12/30   |
|                             | IFII 20/30/50RMZ, IFII 20SHS, IFII 20/30/50JFL  |
|                             | IFIIS 20/30/50JFL   |
|                             | 3DS   |
| Scan Field                  | Max. 300 x 300 mm   |
| Working Table Size          | 550 x 360 mm  |
| Front Door                  | Automatic Door  |
| Max. Loading (Z-axis Table) | 25 kg   |
| Z-axis Travel               | 80 - 620 mm   |
| Safety Class                | Class 1 laser product compliant with EN-60825-1<br>Class 2 laser product compliant with CDRH (LFC D + StellarMark C series)<br>Class 3R laser product compliant with CDRH (LFC D + StellarMark I series/3DS series)<br>Class 4 Laser Product Compliant with CDRH with the optional pass-through door module |
| Software                    | G-Mark / MM3D   |
| Operating System            | Win 7 / 8 / 10  |
| Power Supply                | AC Auto Switching 115 / 230V, 50-60Hz / Single Phase  |
| Power Consumption           | Max. 1240W  |
| Operating Temperature       | 15°C~35°C   |
| Operating Humidity          | 10 ~ 80% Non condensing   |
| Dimension (L x W x H)       | 750(L) x 700(W) x 1000(H) mm<br>940(L) x 1020(W) x 1470(H) mm (with package)  |
| N.W.                        | 100 kg  |
| G.W.                        | 180 kg  |
| Optional Item               | Rotary Attachment   |
|                             | MultiFOCUS  |
|                             | Air Extraction System   |

## Max. work piece size

| C-Series |              |                      |        |        |
|----------|--------------|----------------------|--------|--------|
| Lens     | Scan Area    | Max. Work Piece Size |        |        |
|          |              | Length               | Width  | Height |
| 10       | 10 x 10 mm   | 550 mm               | 360 mm | 577 mm |
| 50       | 50 x 50 mm   |                      |        | 543 mm |
| 70       | 70 x 70 mm   |                      |        | 514 mm |
| 140      | 140 x 140 mm |                      |        | 390 mm |
| 140DL    | 140 x 140 mm |                      |        | 337 mm |

| I-series |              |                      |        |        |
|----------|--------------|----------------------|--------|--------|
| Lens     | Scan Area    | Max. Work Piece Size |        |        |
|          |              | Length               | Width  | Height |
| 70       | 70 x 70 mm   | 550 mm               | 360 mm | 485 mm |
| 110      | 110 x 110 mm |                      |        | 405 mm |
| 180      | 180 x 180 mm |                      |        | 304 mm |
| 300      | 300 x 300 mm |                      |        | 53 mm  |

\* Above specifications are subject to change without further notices. See dealer or visit <http://www.GCCworld.com> for more details.  
\* All above spot size will be material dependent.

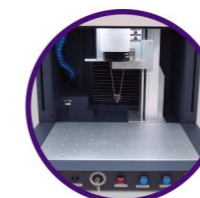
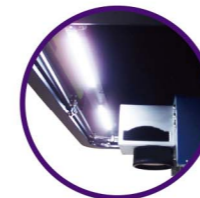
Authorized Dealer

[www.GCCworld.com](http://www.GCCworld.com)

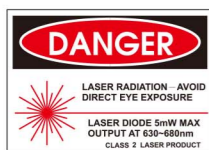
## GCC LaserPro

# LFC D Desktop Workstation

Small and compact, make ideas happen



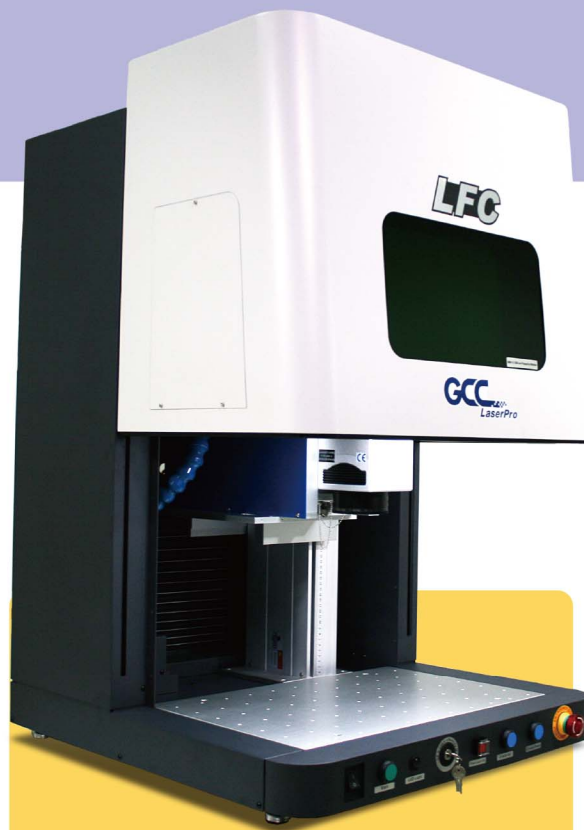
- Class 1 safety and MD (machine directive) certified for Industrial professions who care for operators' safety during laser processing
- Wide range of configurations for automation and applications
- Removable side panels for long objects
- Ideal for large objects or batch marking
- Easy setup and operation
- Sturdy and rigid steel chassis to meet industrial requirements
- Compatible with all GCC LaserPro StellarMark C (12W/30W), I, and 3DS series markers





# Laser Marker

## **GCC LaserPro LFC D Desktop Workstation**



### **LFC D Desktop Workstation**

GCC LaserPro LFC D is a desktop workstation for laser markers. The industry-level equipment has many advanced features such as an anti-trapping door, key switch, user-level control, pass-through, etc. and meets customers' needs completely. LFC D is considered a class 1 device to keep operators safe and sound and, therefore, the best industrial solution.

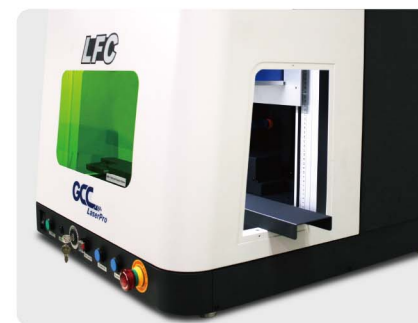
#### **300x300 mm Standard Table**

Standard table with matrix M6 circular slots for fixture mounting; work piece setup could not be easier than this.



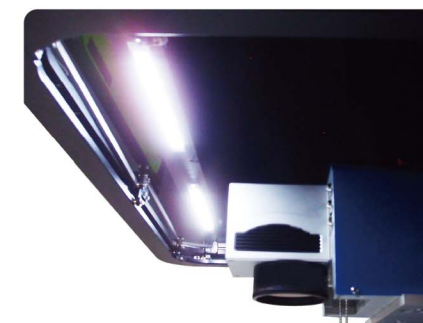
#### **Pass-through Side Panel**

Removable side doors allow user to process long work pieces with ease for greater business flexibility.



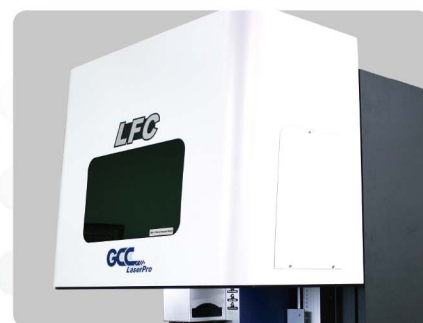
#### **Internal Illumination**

LED illuminates the working space for clear view of work in process.



#### **Key Switch**

Key Switch manages different authority levels between Service Mode and Operator Mode to prevent unauthorized access to the production setups.



#### **Automatic and Anti-Trapping Safety Door**

Automatically controlled front door opens and closes to secure safe operation.



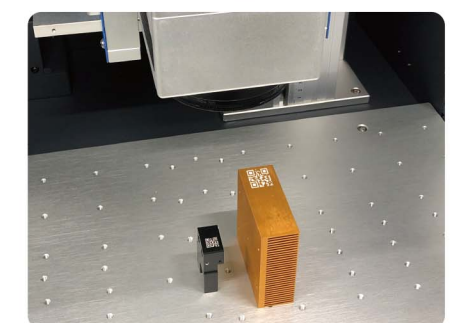
#### **Electronic Z Axis**

Electronically controlled Z up and down buttons make it easy to fine tune the focus.



#### **Emergency Stop**

Big red button on the right of machine allows operators to stop the laser and AC power immediately for much safer operation.



#### **MultiFOCUS Function (Optional Item)**

MultiFOCUS function allows user to define multiple focal distances at once according to the object height and Z-axis automatically adjusts accordingly, eliminating the frequent needs to set focal distance.